

# Automation Control Environment (ACE) 4.0

## OMRON's Premier PC-based Software Package for Production Automation

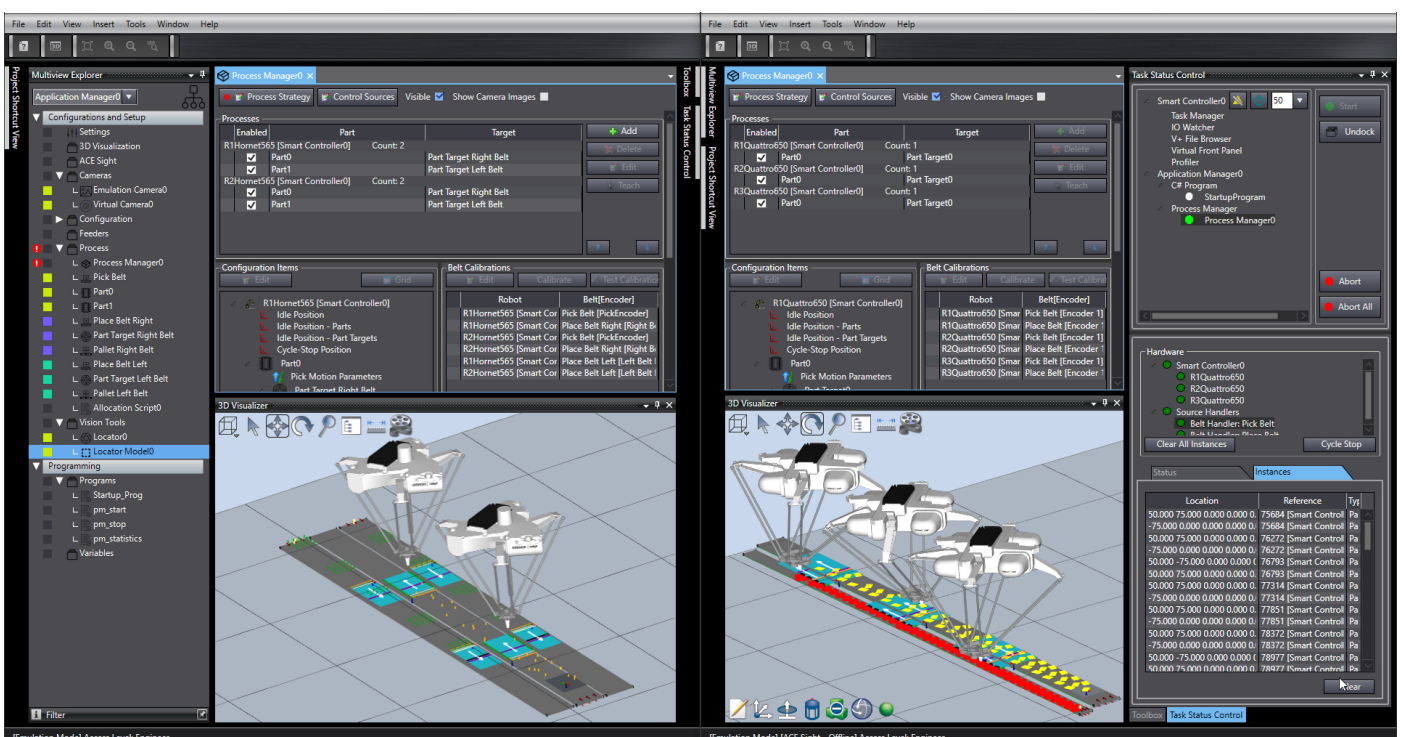
OMRON Automation Control Environment (ACE) is a powerful software platform that provides an effective way to deploy industrial automation applications. ACE allows users to easily configure robots and vision, and guides users through step-by-step calibration processes to streamline setup and ultimately increase productivity.

ACE 4.0 helps you quickly and easily set up your robot systems. It now offers a new user-friendly interface and includes new capabilities to make it even simpler to design and deploy the most efficient production lines.

- Platform to manage OMRON's **entire portfolio** of industrial robots, controls, vision and flexible feeding systems
- Step-by-step **wizards** to design a **scalable** packaging line, from proof-of-concept to deployment
- Advanced **vision** tools for localization, identification, measurement, and inspection

## Intuitive Interface

ACE 4.0 is a big step toward seamless integration with OMRON's industry-leading Sysmac platform. Its new interface is a dramatic shift to a more intuitive platform designed to be easier to find what users need, with superior data visualization and keyboard shortcuts.

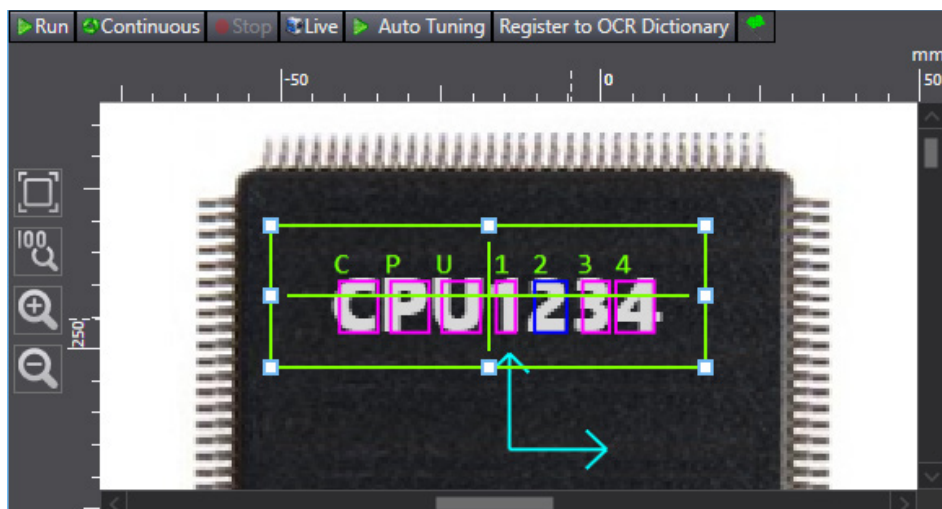


*Now multiple ACE instances can be opened side-by-side, giving users references of past projects during development.*

## Enhanced Integrated Vision with Inspection

ACE 4.0 includes **35** vision tools, including inspection tools from OMRON FH Vision libraries. It's now faster and easier to set up vision inspection for advanced assembly and packaging. The system also improves traceability of manufacturing processes.

- Barcode, QR code, data matrix, and optical character recognition
- Image processing, background suppression, and edge extraction
- Complex blob analysis and shape matching
- Color recognition and analysis
- Faster, optimized object localization and recognition in non-ideal lighting conditions
- Precise defect detection
- Image orientation correction



ACE 4.0 offers optical character recognition (OCR, shown) in addition to barcode and QR code reading.

**OMRON Corporation** Industrial Automation Company  
Kyoto, JAPAN

Contact: [www.ia.omron.com](http://www.ia.omron.com)

### Regional Headquarters

**OMRON EUROPE B.V.**  
Wegalaan 67-69, 2132 JD Hoofddorp  
The Netherlands  
Tel: (31)2356-81-300/Fax: (31)2356-81-388

**OMRON ASIA PACIFIC PTE. LTD.**  
No. 438A Alexandra Road # 05-05/08 (Lobby 2),  
Alexandra Technopark,  
Singapore 119967  
Tel: (65) 6835-3011/Fax: (65) 6835-2711

**OMRON ELECTRONICS LLC**  
2895 Greenspoint Parkway, Suite 200 Hoffman Estates,  
IL 60169 U.S.A.  
Tel: (1) 847-843-7900/Fax: (1) 847-843-7787

**OMRON ADEPT TECHNOLOGIES, INC.**  
4550 Norris Canyon Road, Suite 150, San Ramon, CA 94583 U.S.A.  
Tel: (1) 925-245-3400/Fax: (1) 925-960-0590

**OMRON (CHINA) CO., LTD.**  
Room 2211, Bank of China Tower, 200 Yin Cheng Zhong Road,  
PuDong New Area, Shanghai, 200120, China  
Tel: (86) 21-5037-2222/Fax: (86) 21-5037-2200

Authorized Distributor:

© OMRON Corporation 2019 All Rights Reserved.  
In the interest of product improvement,  
specifications are subject to change without notice.

Cat. No. I844-E-01

0319 (0319)