

OMRON

OMRON TM Collaborative Robot S Series



The OMRON TM S Series of collaborative robots includes advanced hardware options and expanded safety features and certifications.

OMRON TM S Series Robots

The OMRON TM Robot S Series includes a wide variety of models with reach and payload suitable for different applications, including the DC power mobile robot compatible, EtherNet/IP, and PROFINET versions.

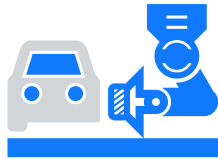
With 33 safety features, the OMRON TM S Series meets ISO 13849-1, Cat.3, PL d and ISO 10218-1 safety standards, certified by TUV Nord. The new OMRON TM S Series also comes with the UL/CSA certifications from SGS.



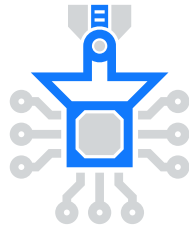
With the PalletBoost 5 license, Omron now delivers enhanced payload performance for its heavy-payload cobot series, increasing capacity by 5 kilograms. This upgrade enables the TM25S and TM30S to handle up to 30 and 35 kg for specific movements, providing customers with greater flexibility, efficiency, and operational capability.

Target Industries

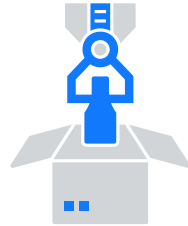
OMRON TM S Series Robots are designed for a wide variety of applications in a number of industries.



ENVIRONMENTAL
MOBILITY



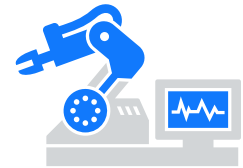
DIGITAL
DEVICES



FOOD &
COMMODITIES



MEDICAL



LOGISTICS

Target Applications



VISUAL INSPECTION

OMRON TM robots comes standard with built-in high resolution camera and can conduct visual inspection on parts, part numbers and labels for greater accuracy and higher quality.



ASSEMBLY

Our robots can improve throughput and consistency of repetitive or complex assembly tasks including part joining, insertion, tool changing, and working alongside people.



MOBILE MANIPULATION

Mounting an OMRON TM robot onto an OMRON LD or MD autonomous mobile robot automates not only transportation of goods but also complex picking operations.



PALLETIZING

Palletizing operation are faster than ever with increased joint speed and range. With a wide range of available payloads and reach, you can find the robot that is right for your application.



MACHINE TENDING

Avoid repetitive and dangerous work by letting a robot tend CNC machines, injection molding machines, stamping and punch pressers, grinding, and cutting machines.



PACKAGING

Our robots can pick up, inspect, and sort products directly from a moving conveyor belt.



PICK AND PLACE

Our robots are highly flexible and have a small footprint, so they can easily be moved from one station to another for high-mix / low-volume pick-and-place applications.



MORE

The wide range of payload and reach options, combined with high precision, high resolution camera, and advanced safety features makes OMRON TM S Series robots the ideal choice for nearly any application.

Ease of use

Improved hand guidance and next-generation teach pendant make programming the OMRON TM S Series easier than ever.

Advanced hand guiding experience:

Applications can be programmed using the built-in hand guidance function. Simply move the head to the desired position, and with the click of a button, the position is taught.



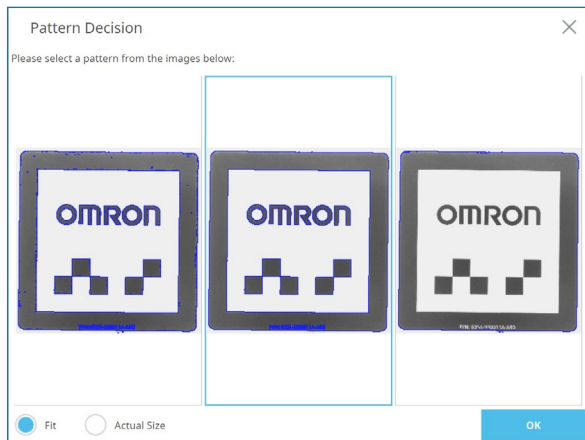
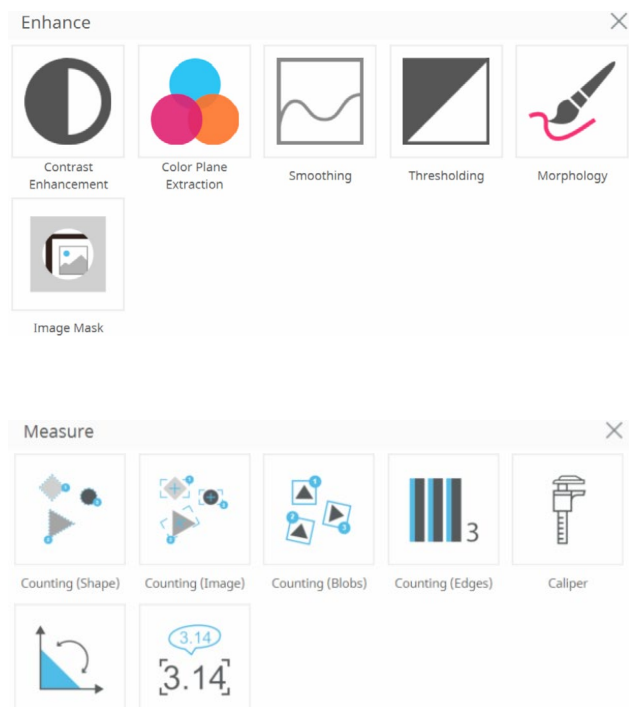
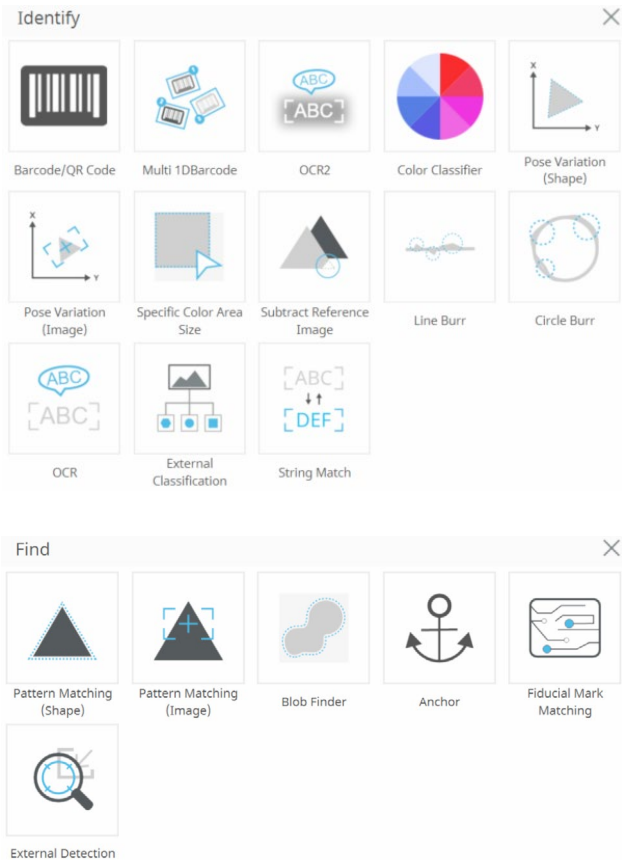
The new Robot Stick is designed to convert an **OMRON TM Screen** to a teaching pendant.

- Operate, control, and program the robot using a touch screen
- No wiring or additional chip installation required
- OMRON TM Pen comes standard with the OMRON TM S Series Robots

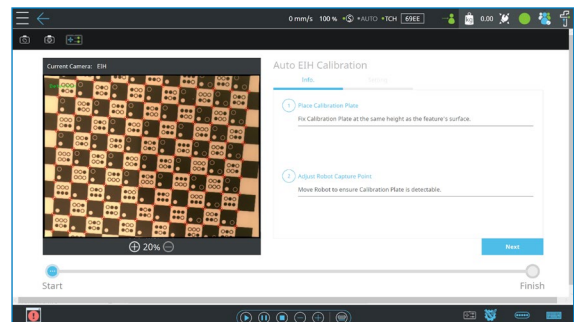


Built-In Vision System

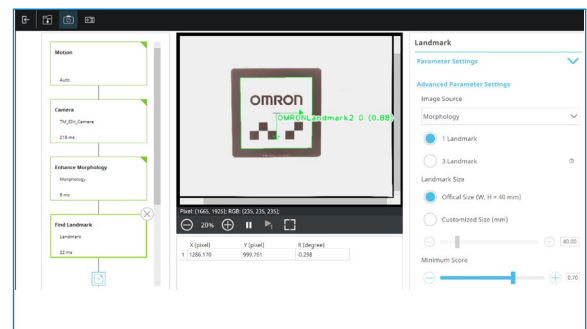
The integrated vision system is the biggest advantage of OMRON TM robots. It is designed for industrial grade pattern recognition, object positioning, and feature identification. Users can set up vision tasks for immediate deployment without the challenge of integrating external cameras or lighting equipment.



Pattern Matching Template



Vision Calibration



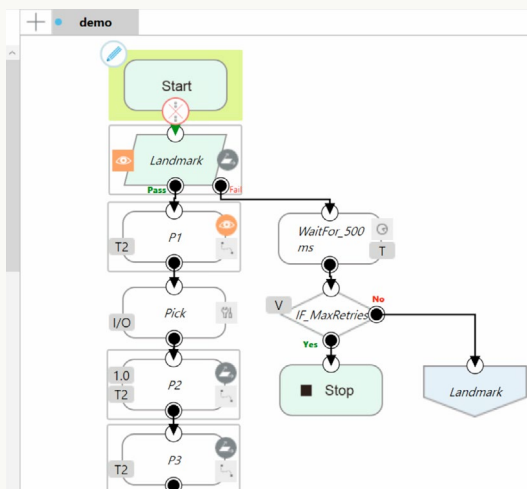
TMvision Workflow

Ease of use

The OMRON™ S Series robots are easy to use and can be programmed using a variety of methods, including hand guidance, flow-chart programming or manual scripting.

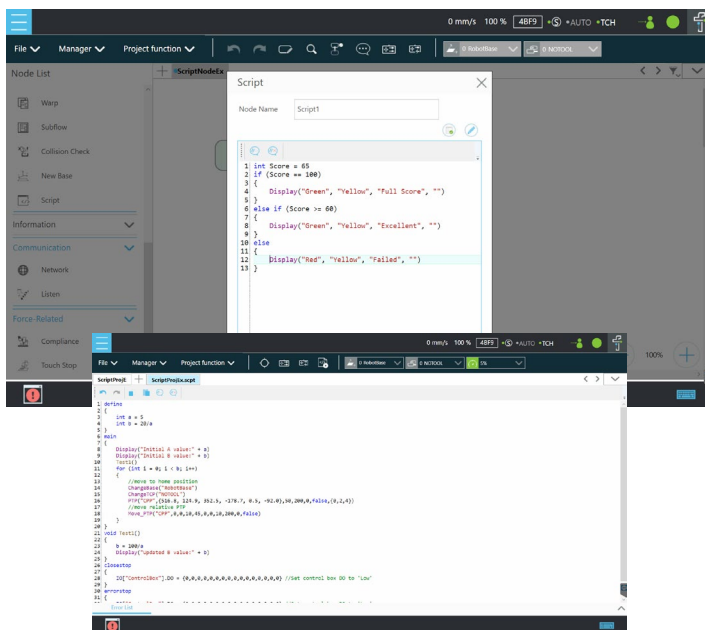
Graphical Programming

Our innovative programming enables users to automate tasks with flow-based software, creating comprehensive workflows with a simple click-and-drag method in TMflow. Via the Operator Platform, building an application software layout is very intuitive, allowing for drag-and-drop visual elements with no need for trial and error through complex coding.



OMRON Next Generation Robot – Faster Programming

The script programming method in both Project and Mode will be available for the S Series. The Script language may enable the advanced users to program Robot projects more concisely and organized.



TMSimulator

The new OMRON TMSimulator lets users test and verify proper operation by developing, editing and running programs offline. By building programs offline, users can develop new processes without having to take a robot out of production.

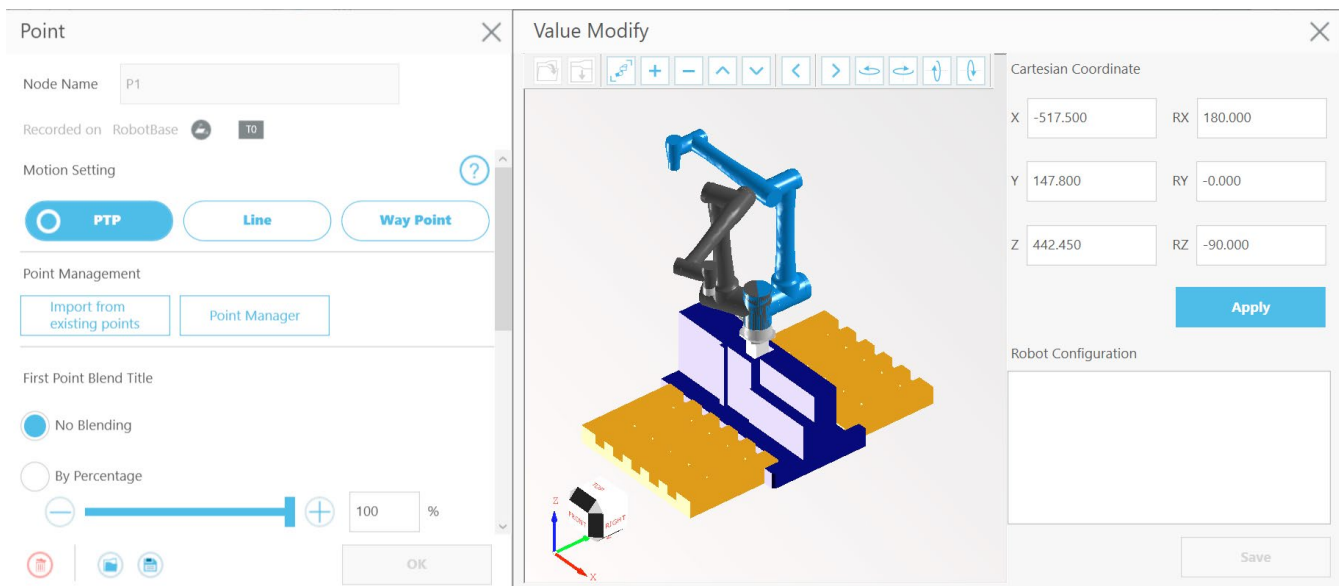
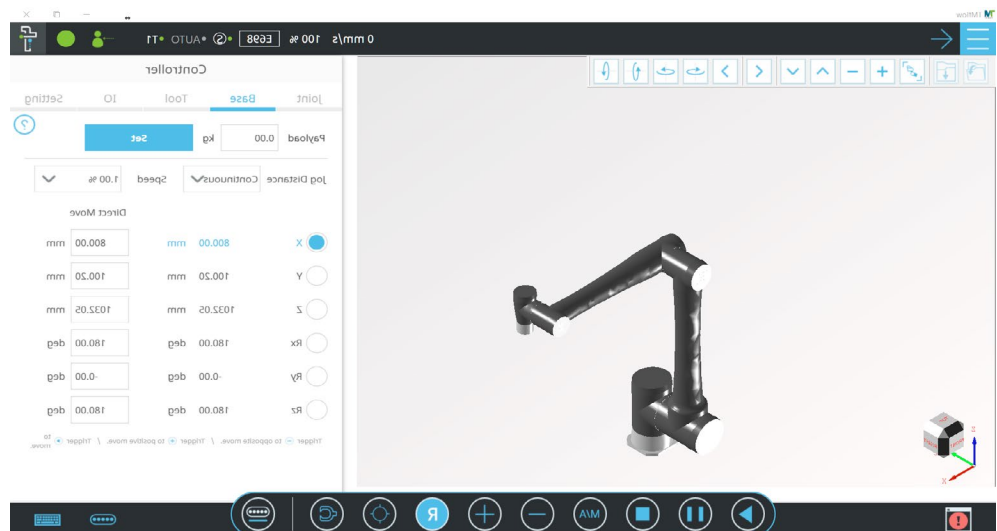
The onscreen display includes a virtual robot stick so users can control the robot just as they would control a physical robot. In addition to the standard robot control buttons, the virtual robot stick has buttons for RESET, Point, and Gripper.

The TMSimulator can test Listen Node and Network Node communications. Modbus, Ethernet Slave, and serial configurations can also be tested.

The TMSimulator also has options for DI and AI Signal Control Box Input Control.

This version of TMSimulator works with the following S Series Model robots (HW5.03):

- TM5S-X
- TM6S-X
- TM7S-X
- TM12S-X
- TM14S-X
- TM20S-X
- TM25S-X
- TM30S-X



OMRON's highly versatile programming software for collaborative robots is more capable and easier to use than ever before.

Programming Improvements

Project Stop and Error Stop Handling Procedures

- Users can create special subflow logic to define the steps the robot takes after a project or error stop.

Tool Setting Improvements

- Tool Settings option added to the project page for easier access so users no longer need to navigate away from the project page to change Tool Settings.

Operational Improvements Behavior

Improvements when Passing Through Singularity

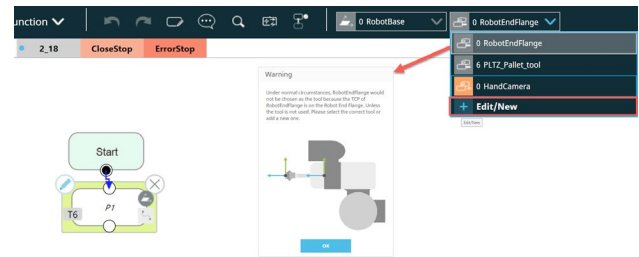
- The new Singularity Handling feature improves the robot's behavior by purposefully slowing down at the point of singularity and avoiding joint speed errors and sudden stops. This feature can be enabled for Point and Move nodes that use Line motions. Motion blending will be disabled when Singularity Handling is enabled.

Redefine Payload Settings in Motion Nodes

- New Payload Settings UI in motion nodes make it easier for users to configure the robot picking up or releasing a workpiece. For applications with unknown or widely varying payloads, the robot can now use an external force and torque sensor to automatically calculate and compensate for the payload mass.

Pattern-Matching UI Improvement

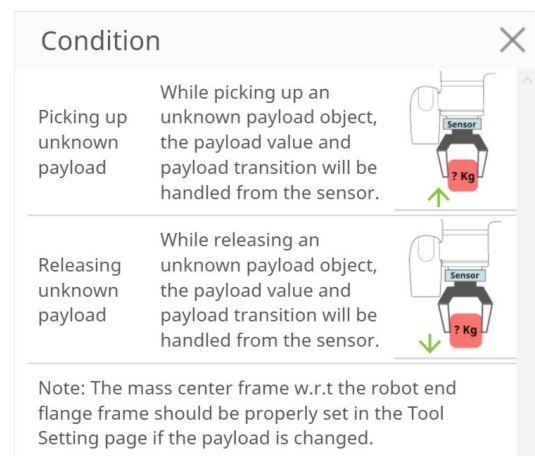
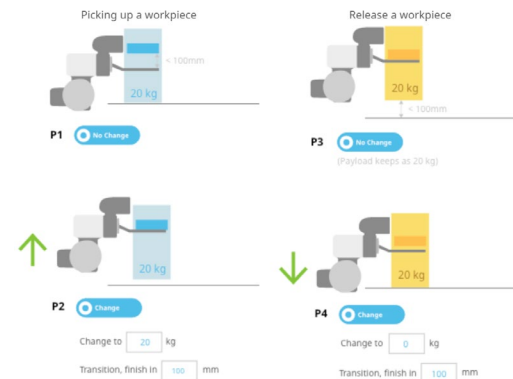
- Users can choose from three pattern-matching algorithms in TMvision Find tasks for more reliable results. The object detection score is more intuitive, represented as a single numerical value.



Tool Setting Improvements

Payload

The payload transition function is designed to solve the payload transient changes while robot picking up/releasing a workpiece. It requires to set one additional motion node before fully picking up or fully release the workpiece, the following figures show the example configuration of picking up and release.



Payload Settings

Safety

Newly added safety functions provides for a wide variety of safety devices/switch configurations without the need for an additional safety controller.

Safety Features

- 33 Safety features in total
- 14 Newly added safety features

Robot Stick E-Stop	Cartesian Limit A
User Connected E-Stop Input	Cartesian Limit B
Encoder Standstill Output	NEW Robot Stick Enabling Switch
User Connected External Safeguard Input	NEW Reset Output
Additional Joint Torque Monitoring	NEW Robot Stick Reset
Joint Position Limit	NEW Enabling Switch on end-module
Joint Speed Limit	NEW User Connected External Bumping Sensor Input
Speed Limit	NEW End-Point Reduced Speed Limit
Additional Force Limit	NEW User Connected MODE Switch Input
User Connected External Safeguard Input for Human-machine Safety Settings	NEW User Connected Reset Input
Robot E-Stop Output	NEW User Connected Soft Axis Setting Switch Input
User Connected External Safeguard Output	NEW Enabling Switch Output
Robot Human-Machine Safety Setting Output	NEW MODE Switch Output
Robot Recovery Mode Output	NEW Safe Home Output
Robot Moving Output	NEW Safety Tool Orientation Limit
User Connected Enabling Switch Input	NEW User-Connected Freebot Input
User Connected E-Stop Input without Robot E-Stop Output	

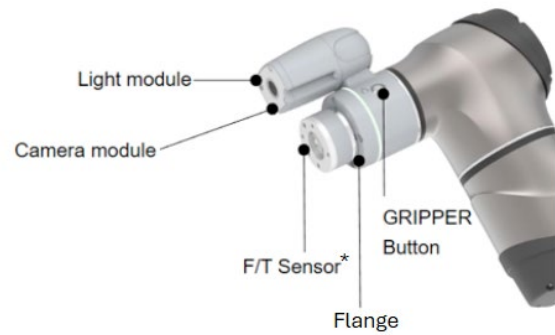
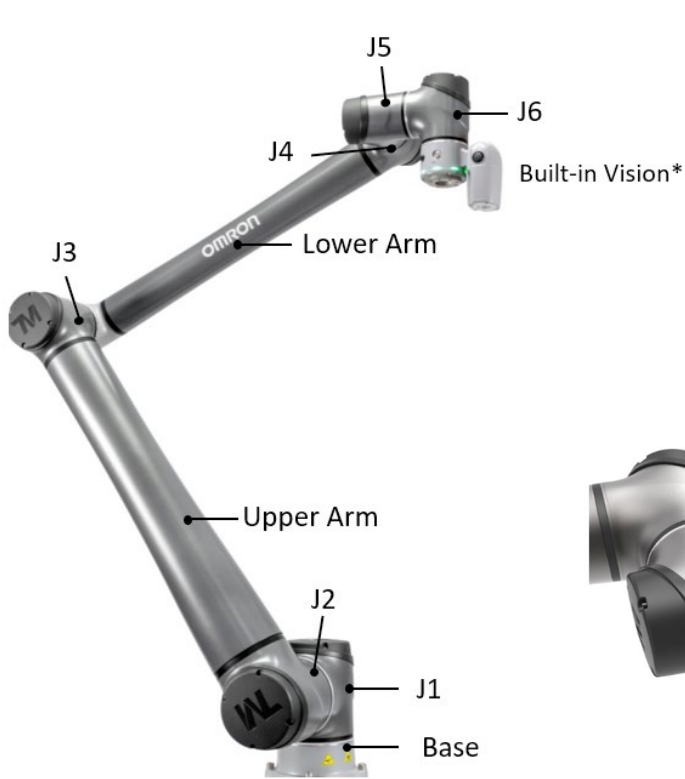
Certifications:

- ISO 13849-1, Cat.3, PL d
- ISO 10218-1:2011
- UL & CSA Safety Certification

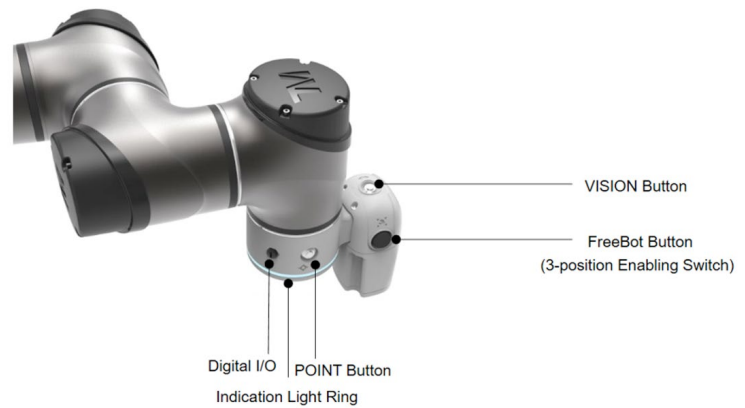
Protections:

- IP65 rating for Robot Arm, IP54 AC control box, Robot Stick and TM screen.
- ISO Class 3 for the Cleanroom
- Enhance oil resistant covers for joints

Anatomy of OMRON TM S Series Robots

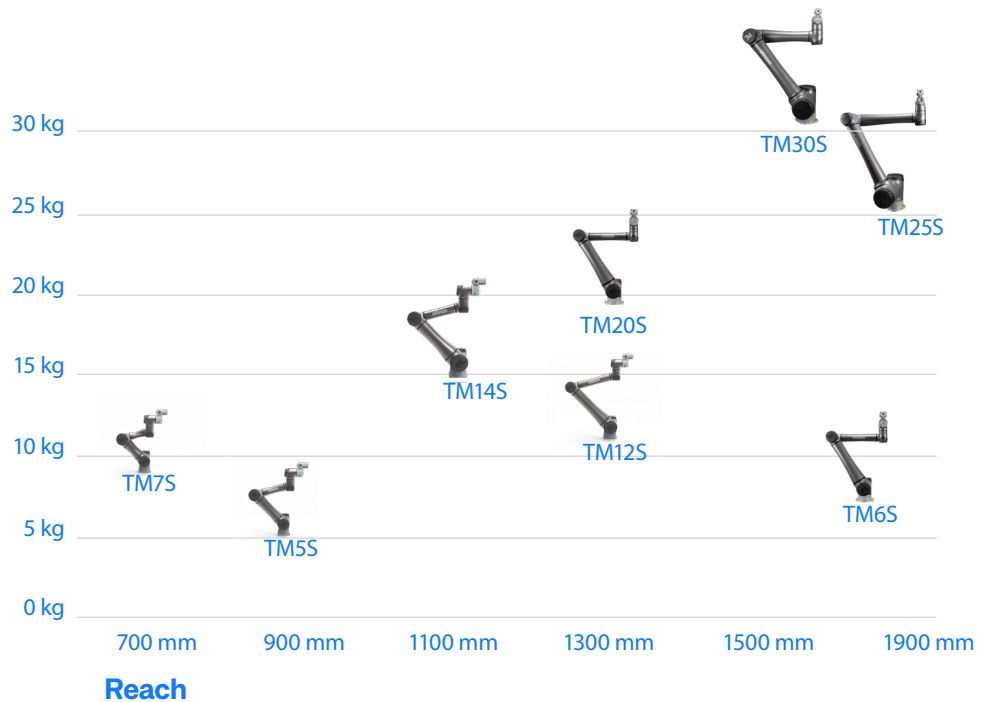


*F/T Sensor is only available for HW5.03 TM25S and TM30S Units






*Not available for non-camera version

Maximum Payload




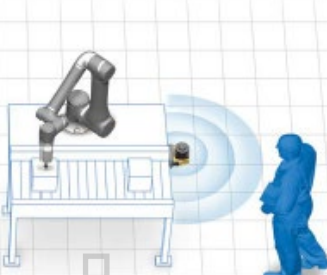
OMRON S Series

	Payload	A wide range of payload options from 5 kg up to 30 kg.
	Joint Range	360° freedom for J1, J2, J4, J5 and J6
	Motor Speed	The joint speed J6 increased from 225 °/s to 450 °/s; Faster or equivalent J1~J5.
	Repeatability	Maximum 70% improvement of repeatability to 0.03 mm*
	Ingress Protection Level	IP65: Robot Arm IP54: AC Control Box, Robot Stick, TM Teach Pendant
	Anti Cutting Oil Corrosion	Anti Cutting Oil for the Corrosion: Enhanced joint covers for TM5S/TM6S/TM7S/TM12S/TM14S/TM20S. Metal Joint covers for TM25S and TM30S
	Safety	33 Safety features; PLD Cat.3, TÜV Nord certified CE SGS certified UL/CSA



Cobots vs. Industrial Robots

OMRON TM Collaborative Robots change the way in which traditional factories work. Physical cages are no longer needed. Designed for high-mix, low-volume production at a speed comparable to human workers, OMRON cobots can work in harmony with humans.

			
	Industrial Robot <ul style="list-style-type: none"> • Requires cage • Multiple sensors required for safety 		Collaborative Robot <ul style="list-style-type: none"> • Smaller footprint • No physical barriers
	Traditional Industrial Robots	OMRON Cobots	
Safety	Needs a physical barrier, such as a fence or cage, to ensure safety.	Designed to be inherently safe but may need safety sensors (e.g. OMRON safety laser scanner) based on risk assessment. Typically does not need physical barrier if working in collaborative mode. Simple safety software with easy-to-use graphical user interface.	
Workspace	Separated from human workspace.	Can be shared with people.	
Footprint	Large	Small	
Flexibility	No. Fixed to one location and works on dedicated task.	Yes. Can be moved between locations during the day to work on different tasks. Built-in camera and Landmark positioning enable quick relocation.	
Programming	Difficult. Requires skill and training.	Easy. Can be done with minimal training.	
Setup	Requires advanced skills and is time-consuming.	Quick and easy.	
Application	Fit for mass production at high speeds.	Fit for high-mix, low-volume production at a speed comparable to human workers. Can be used at high speeds with safety measures.	
Cycle Time (Pick & Place)	Down to seconds	Over 5 seconds	
Speed of Process (Path)	Fast	Slow	
Repeatability	± 0.02 mm	TM6S ±0.01, TM5S, TM7S, TM12S, and TM14S: ± 0.03 mm, TM20S, TM25S, TM30S: ± 0.05 mm	
Environment	IP requirements above IP54	IP54 for robot arm, AC control bo, Robot Stick, and TM Screen	
Process Complexity	Can be complex	Should be simple	

Plug & Play

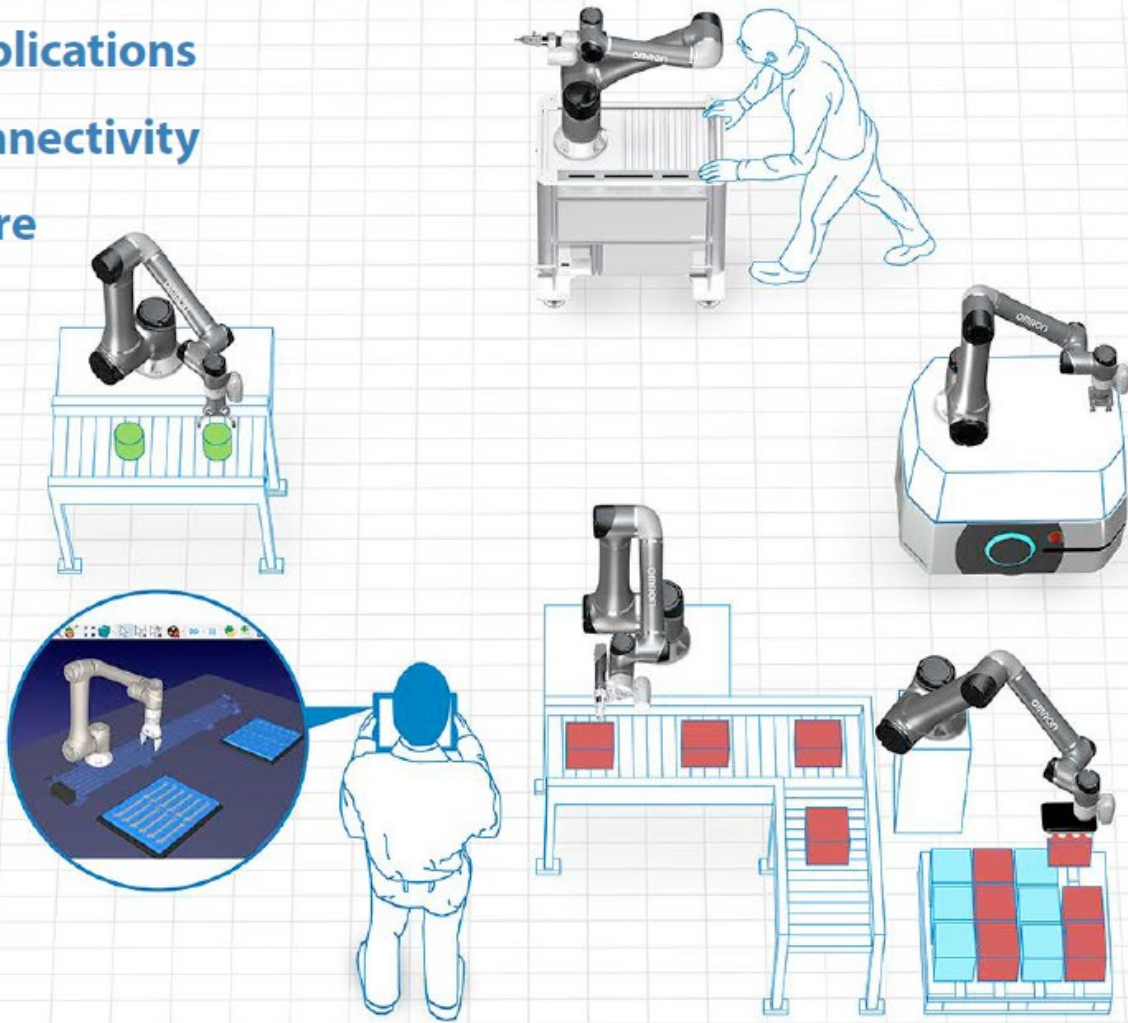
OMRON has partnered with a select number of companies to offer a wide variety of peripherals that quickly and easily integrate with our cobots, allowing for a faster deployment and return on investment. They are collectively referred to as Plug & Play devices and software, designed to serve a broad range of customer applications and meet the highest testing standards of OMRON.

Grippers

Applications

Connectivity

More



Plug & Play Kits

All products come as a ready-to-use kit for easy installation



S Series Specifications

		TM5S	TM6S	TM7S	TM12S	TM14S	TM20S	TM25S	TM30S
Weight with camera		23.9 kg	35.5 kg	22.9 kg	23.5 kg	22.6 kg	33.3 kg	81.6 kg	80.6 kg
Weight without camera		23.6 kg	35.2 kg	22.6 kg	33 kg	32.7 kg	33.0 kg	81.3 kg	80.3 kg
Maximum payload		5 kg	6 kg	7 kg	12 kg	14 kg	20 kg	25 kg	30 kg
Reach		900 mm	1800 mm	700 mm	1300 mm	1100 mm	1300 mm	1902 mm	1702 mm
Joint ranges	J1, J2, J4, J5, J6	± 360°							
	J3	± 158°	± 166°	± 152°	± 162°	± 159°	± 162°	± 166°	± 170°
Joint speed	J1, J2	180°/s			120°/s		130°/s	100°/s	
	J3	180°/s			180°/s		95°/s	130°/s	
	J4	225°/s			225°/s		125°/s	195°/s	
	J5	225°/s			225°/s		160°/s	210°/s	
	J6	450°/s			450°/s		190°/s	225°/s	
Average speed*		1.4 m/s	1.1 m/s		1.3 m/s	1.1 m/s		2.1 m/s	
Repeatability		± 0.03 mm	± 0.01 mm	± 0.03 mm			± 0.05 mm		
Degrees of freedom		6 rotating joints							
I/O ports	Control Box	Digital In: 16 / Digital Out: 16 Analog In: 2 / Analog Out: 2							
	Tool Con.	Digital In: 3 / Digital Out: 3							
I/O power supply		24 V 2.0 A for control box and 24 V 1.5 A for tool							
IP classification		IP65 for Robot Arm, IP54 for Control Box*3, Robot Stick and TM Screen							
Cleanroom Class		ISO Cleanroom Class 3							
Operating Temperature and Humidity		0 to 50°C, 85% max. (with no condensation)							
Motor Power supply		100-240 VAC, 50-60 Hz for AC units; 24 to 60 VDC for DC units						200-240 VAC, 50/60 Hz (AC) 48-60 VDC (DC)	
I/O interface		2 COM, 1 HDMI, 3 LAN, 2 USB2.0, 4 USB3.0							
Communication		RS-232/RS-422/RS-485, Ethernet, Modbus TCP/RTU (master & slave), PROFINET (optional), EtherNet/IP (optional)							
Programming environment		TMflow (flowchart based), TMScript (script-based), TMCraft (developer-based)							
Certification		TÜV-certified ISO 13849-1, ISO 10218-1, ISO/TS 15066, UL1740, CAN/CSA Z424-14 (R2019), SEMI S2 (optional)							
Robot vision	Eye in hand (built in)	1.2MP / 5MP, color camera (camera models only)							
	Eye in hand (optional)	Support Maximum 2 GigE 2D cameras							

* Average speed was tested and calculated with robot in Performance Mode.

*3 The AC Control Box has an IP54 rating. The DC Control Box is not IP rated.

Notes

This image shows a full page of blank handwriting practice paper. It features approximately 20 evenly spaced, horizontal blue lines across the entire width of the page. The background is a solid off-white color, providing a clear contrast for the blue lines. There are no margins, text, or other markings present.



OMRON

Cat. No. I892-E-06 (12/25)

4225 Hacienda Drive Pleasanton, CA 94588

robotics.omron.com

(800) 556-6766