



TMflow 2.24

Putting the power of advanced automation in your hands

New safety, motion, scripting, and 3D simulation tools help you program, validate, and optimize cobot applications faster.

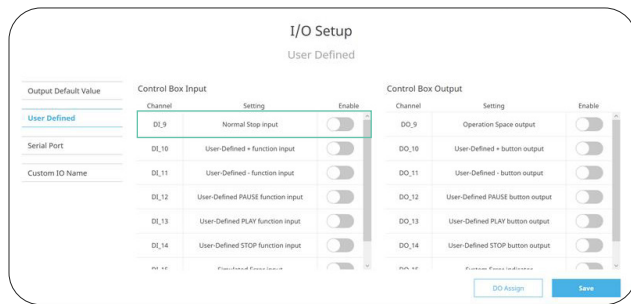
What's New in TMflow 2.24?

Built for faster development and streamlined deployment, TMflow 2.24 helps users validate applications, simplify programming, and align with current safety standards, including both ISO 10218-1:2025 and ISO 10218-2:2025.

Key updates include:

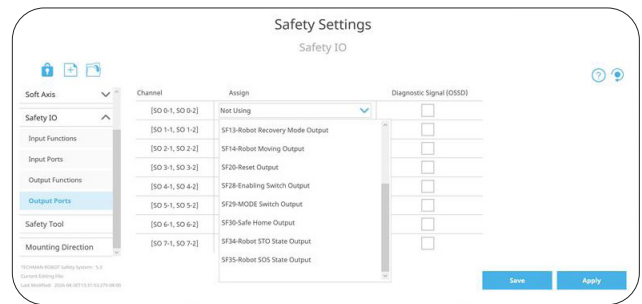
Normal Stop

Supports user-configurable Category 1 stop functions for easier safety integration.



STO and SOS Safety Output

Shares STO and SOS safety state information with external devices for improved system integration.



Expanded Singularity Handling to More Motion Nodes

Additional motion nodes now support singularity handling for greater programming flexibility.

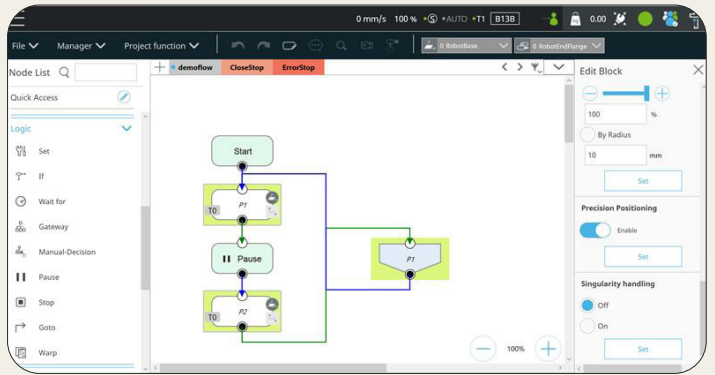
	TMflow 2.22 & TMflow 2.24	TMflow 2.24 Only
Supported motion nodes include:	Point/Line, Point/Other, Move/Line, Move/Other, Controller, Move, Circle, Path, CVCircle, CVPoint	Pallet/Line, Pallet/Other, Touch Stop/Path/Single Axis, Touch Stop/Path/Customized/Linear

Batch Configuration Support and Strategy Setup

Simplifies how users review and manage singularity handling settings across motion nodes for more efficient robot motion configuration.

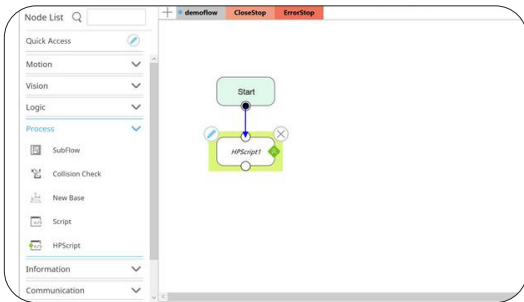
New SCARA Move Node

Improves singularity handling during flange alignment with the robot base, helping support smoother SCARA motion control.



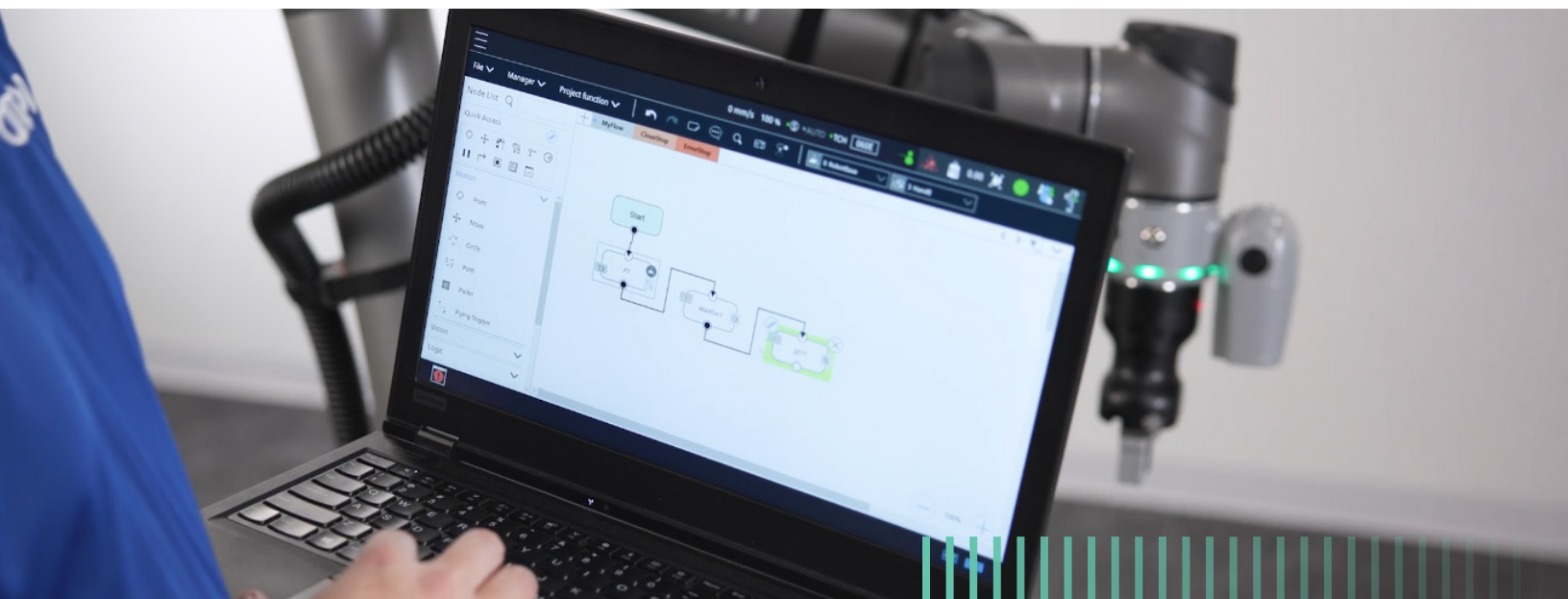
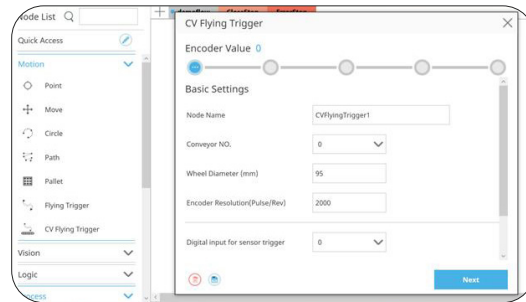
High-Priority Script (HPScript)

Enables faster, more reliable scripting for real-time sensor integration and system-level control. Built on Lua-based scripting, HPScript includes basic libraries for servo, controller, system, and memory functions.



Flying Trigger With Conveyor

Inspects moving workpieces without stopping the production line, helping maintain throughput in automotive manufacturing and other high-efficiency production environments.

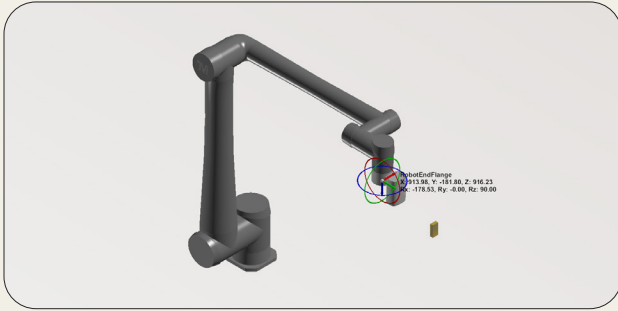


TMscene

Design, simulate, and validate robot applications in a virtual 3D environment before deploying hardware. Import CAD models, create 3D objects, define teaching points, and check robot motion within a modeled workspace to accelerate development and improve confidence before implementation.

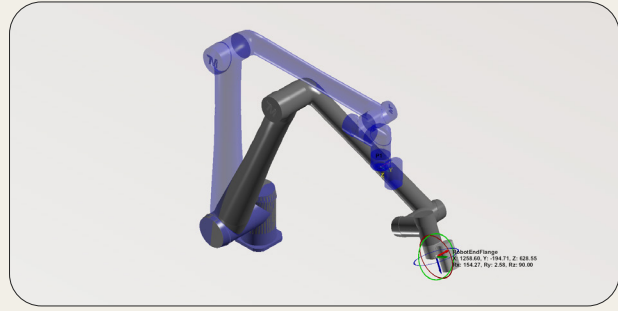
New 6D Hand Guide Ball

Provides precise manual control of the virtual robot with real-time feedback, including object name, reference base, and full coordinate details.



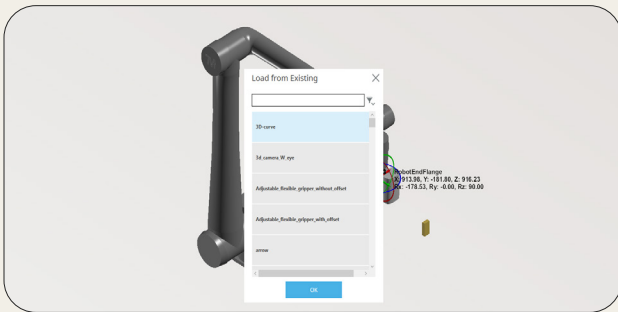
Cartesian or Joint Page Controller

Enables fine control over virtual robot movement and positioning for more precise adjustments.



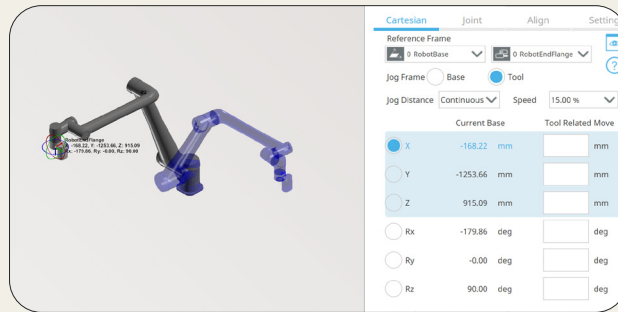
CAD Model Import and Basic 3D Object Creation

Supports CAD model imports and basic 3D shape creation for more flexible scene building.



Teaching and Viewing Points

Lets users define points in a virtual space and check for potential robot motion collisions within imported 3D CAD scenes.



From programming and simulation to deployment, TMflow 2.24 gives users greater control across the collaborative robot workflow. The result is a faster, more flexible path from application development to production.



Ready to Upgrade?

Scan the QR code to explore the latest TMflow release and connect with OMRON to get started on your next collaborative robot application.